

## Who to Contact – Your TA Team

### Courtney Salzer

Project Director, WI FACETS Executive Director

[csalzer@wifacets.org](mailto:csalzer@wifacets.org)

877-374-0511

How I can help:

- Your first place to go!
- Board of Directors issues
- Nonprofit Management topics such as HR, fiscal, operating policies/procedures
- Reporting requirements
- I'm looking for a resource on...
- I'm looking for another center who...
- I need to vent about...
- Do you think I should talk to David about...
- HELP!!!



### Nelsinia Ramos

Multicultural TA Lead, WI FACETS PTI Director

[nramos@wifacets.org](mailto:nramos@wifacets.org)

How I can help:

- Multicultural & multilingual service delivery and outreach practices
- Multicultural-Multilingual networking and learning opportunities
- Identification and dissemination of culturally linguistically appropriate materials
- TA in developing language access plans and outreach plans
- DEI Advisory Committee support



### **Karen Thompson**

Peer TA Specialist Lead, Executive Director for ASK Resource Center

[karen@askresource.org](mailto:karen@askresource.org)

How I can help:

- Serving as back-up to the Project Director for OSEP meetings/events
- Content specialty: Rural and geographically isolated TA
- Facilitating monthly director meetings
- Writing Director Bite Sized Messages
- Convening job alike groups
- Site visits to centers needing any TA and particularly intensive TA
- Board, HR and Fiscal Responsibilities training
- An ear when you need to vent



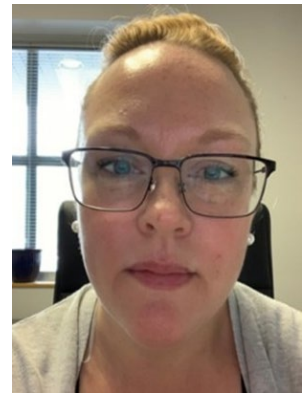
### **Jennifer Diaz**

Peer TA Specialist, Associate Director of Family Services at IN\*SOURCE

[jdiaz@insource.org](mailto:jdiaz@insource.org)

How I can help:

- Creating Staff Bite Sized Messages
- Content specialty: mental health and employee engagement
- Develop protocols for centers to share training curricula with other centers
- Convening job alike groups
- As needed TA



### **Jodi Webb**

Peer TA Specialist, Executive Director at Pathfinder Services of ND

[Jodi.webb@pathfinder-nd.org](mailto:Jodi.webb@pathfinder-nd.org)

How I can help:

- Content specialty: early childhood and coaching
- Additional support for New Directors
- Convening job alike groups
- Site visits
- Board training
- As needed TA



**Kanika Littleton**

Multicultural TA Specialist, Executive Director at Michigan Alliance for Families

[kanika@michiganallianceforfamilies.org](mailto:kanika@michiganallianceforfamilies.org)

How I can help:

- Content specialty: DEI practices and supports, large, urban service areas and schools
- Support for DEI Advisory
- Culturally relevant training
- Convening job alike groups
- As needed TA



**Joe La Belle**

Peer TA Specialist, Director of Programs Impact at Family Network on Disabilities (FND)

[joe@fndfl.org](mailto:joe@fndfl.org)

How I can help:

- Content specialty: technology, social media, marketing, databases
- Social media repository
- Convening job alike groups
- Board training
- As needed TA



**Chris Stagge**

Logistics Specialist, WI FACETS

[cstagge@wifacets.org](mailto:cstagge@wifacets.org)

How I can help:

- Travel and TA activity planning
- Project communication to Directors
- General project support



## **Mel Voegli**

Electronic Communications Specialist, WI FACETS

[mvoegli@wifacets.org](mailto:mvoegli@wifacets.org)

How I can help:

- Website development and maintenance
- Marketing support
- Bite-Sized PD messages
- Nonprofit Management Certificate coordination and support
- Program data management

